

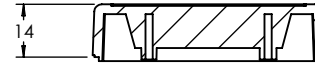
OVERALL ASSEMBLY DIMENSIONS:

EXTERNALS - 104.5 x 61.3 x 27.5

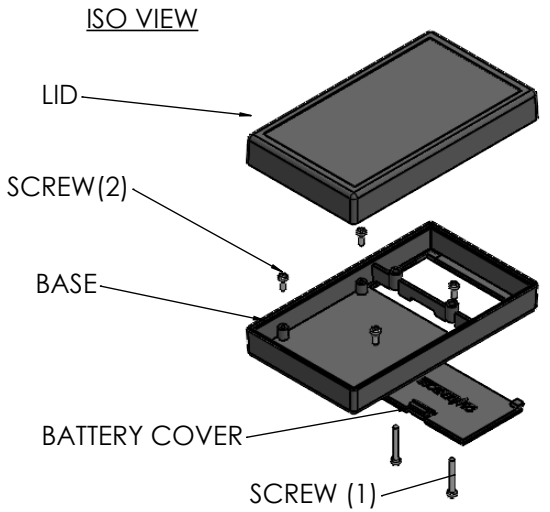
INTERNALS - 99 x 56 x 22



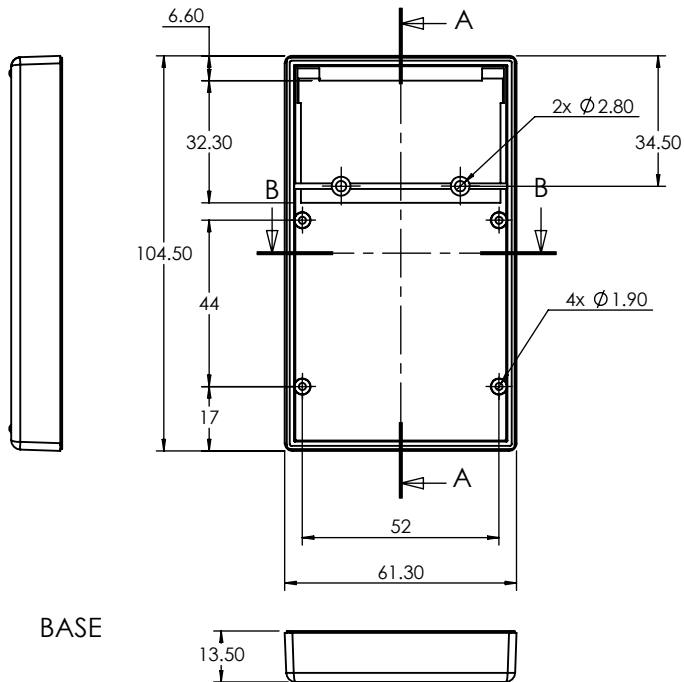
SECTION B-B



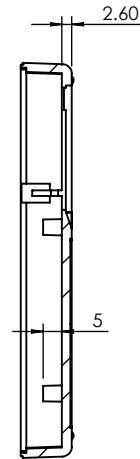
SECTION C-C



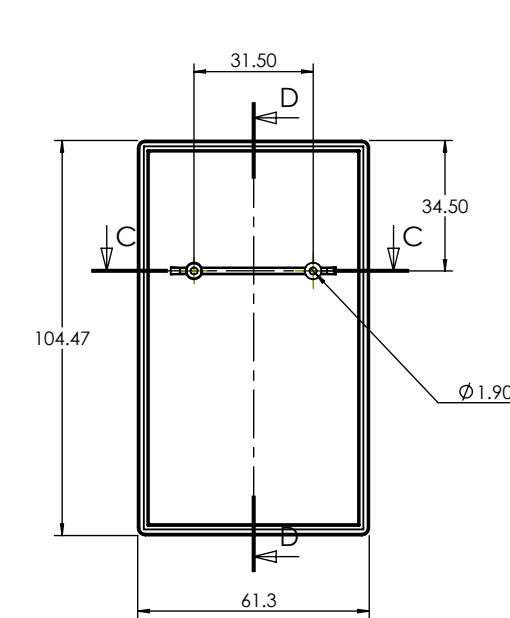
ISO VIEW



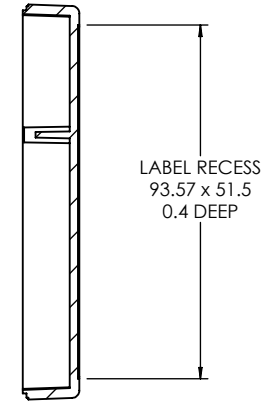
BASE



SECTION A-A



LID



SECTION D-D

LABEL RECESS
93.57 x 51.5
0.4 DEEP

-	-	-	-	-	-	 CAMDENBOSS CONNECT. ENCLOSE. INNOVATE.	COLOUR. BLACK	GAUGE -	DO NOT SCALE DRAWING DEBURR AND BREAK SHARP EDGES	SHEET 1 OF 1
B	26/04/22	1076	UPDATED PCB SCREWS	I.P	J.S		FINISH. TEXTURED	TITLE: DIMENSION DRAWING FOR 2910 SERIES MOBILE CASE SIZE 1	SCALE. 1:2	
A	18/07/13	-	FIRST DRAWN	I.P	-	DRAWING UNITS: MILLIMETERS	MATERIAL. ABS UL 94 - V0	DWG NO.	CHHMC01BK	A4
REV	DATE	ECR	CHANGE NOTE	NAME	CHK'D	TOLERANCES +/- 0.2	PROJECTION. 			