

OVERALL ASSEMBLY DIMENSIONS:

EXTERNALS - 104.5 x 61.3 x 27.5

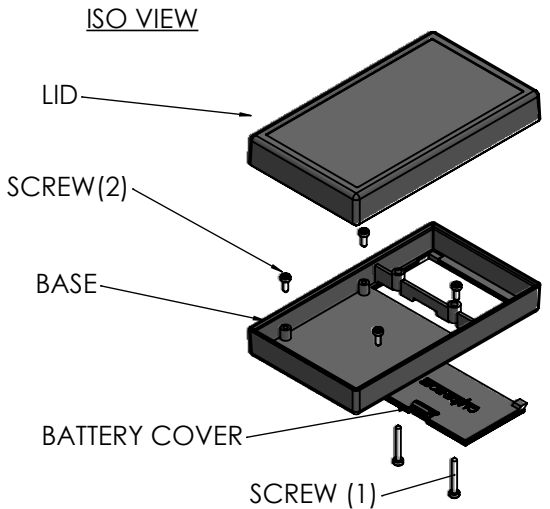
INTERNALS - 99 x 56 x 22



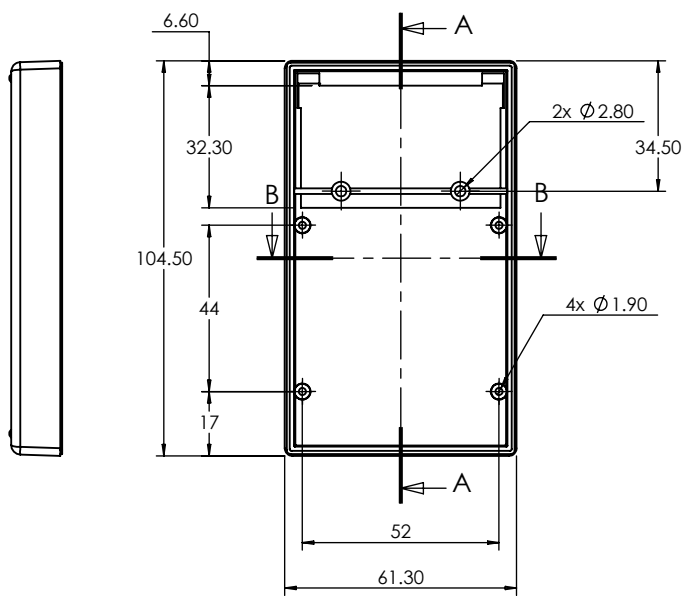
SECTION B-B



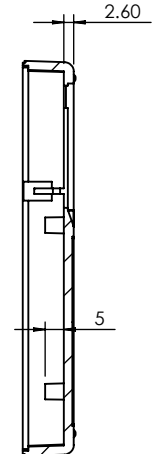
SECTION C-C



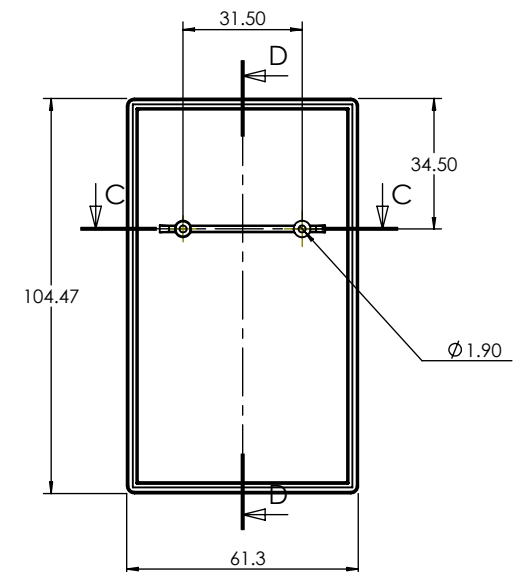
ISO VIEW



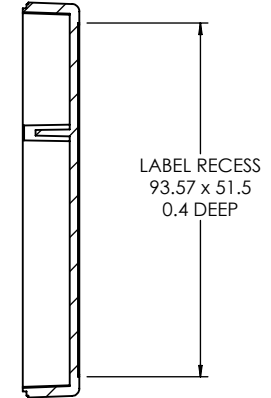
BASE



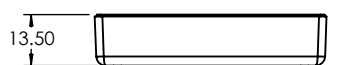
SECTION A-A





LID



SECTION D-D



 CAMDENBOSS JAMES CARTER RD, MILDENHALL, SUFFOLK, IP28 7DE TEL: 01638 716101 FAX: 01638 716354 EMAIL: Sales@CamdenBoss.com WEB: www.CamdenBoss.com				UNLESS OTHERWISE SPECIFIED: DIMENSIONS ARE IN MILLIMETERS		DO NOT SCALE DRAWING		REVISION. 0		
				FINISH. SMOOTH		TITLE: Dimension Drawing For 2910 Series Mobile Case Size 1 Black				
DRAWN IAN PAGANO		SIGNED I.P.		DATE 18/07/13		MATERIAL. ABS		DWG NO. CHHMC01BK		A4
CHK'D -		-		-		PROJECTION. 		SCALE: 1 : 2		SHEET 1 OF 1