

THIS DRAWING IS THE PROPERTY OF CAMDENBOSS AND MUST NOT BE COPIED WITHOUT PRIOR PERMISSION

**NOTE:**

X Spacing: 133.4 mm

Y Spacing: 60.4 mm

TABS TOP & BOTTOM

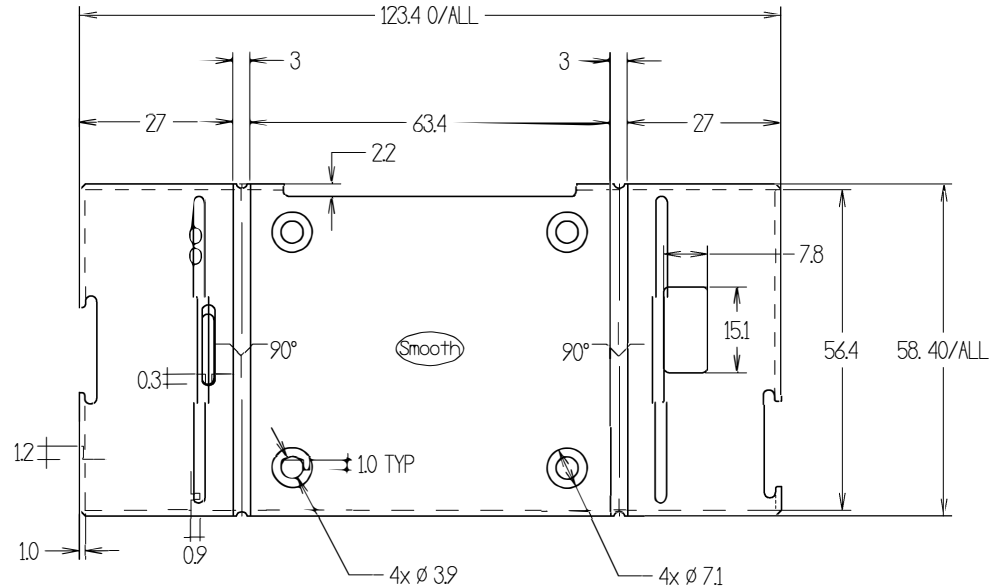
!! KEEP IN VERTICAL STRIPS FOR BENDING CUTS !!

APPROVED

# Carbon Fibre

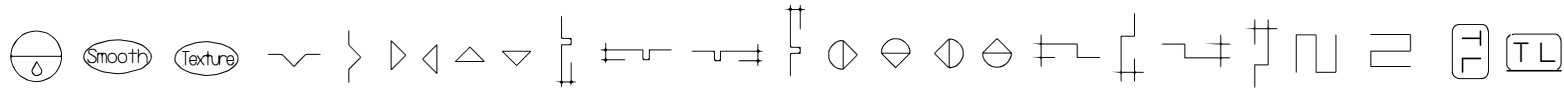


|               |                           |
|---------------|---------------------------|
| PART NUMBER   | 3mm THK MATERIAL & COLOUR |
| CBRPAP-BA-BLK | HIPS HB, GLOSS/MATT BLACK |
| CBRPAP-BA-WHT | HIPS HB, GLOSS/MATT WHITE |
| CBRPAP-BA-CAR | ABS CAPPED, CARBON FIBRE  |
| CBRPAP-BA-CLR | PETG, TRANSPARENT         |



BA × 1

!! ENSURE PROTECTIVE FILM IS KEPT ON AT ALL TIMES !!



| TOOL TABLE |                           |       |
|------------|---------------------------|-------|
| No.        | DESCRIPTION               | ORDER |
| 1          | 6mm STRAIGHT SINGLE FLUTE | -     |
| 2          | 6mm CSK / CHAMFER         | -     |
| 3          |                           | -     |
| 4          | R2 FACET                  | -     |
| 5          |                           | -     |
| 6          | 3mm STRAIGHT SINGLE FLUTE | -     |
| 7          | 2mm STRAIGHT SINGLE FLUTE | 1     |
| 8          |                           | -     |
| 9          | ENGRAVING TOOL            | -     |
| 10         | 1mm STRAIGHT SINGLE FLUTE | -     |

|                |              |                |                 |  |   |   |  |        |          |              |        |              |         |      |               |
|----------------|--------------|----------------|-----------------|--|---|---|--|--------|----------|--------------|--------|--------------|---------|------|---------------|
| -              | -            | -              | -               | <p><b>CAMDENBOSS</b><br/>         JAMES CARTER RD, MILDEHALL, SUFFOLK IP28 7DE TEL: 01638 716501 FAX: 01638 716554<br/>         EMAIL: Sales@CamdenBoss.com<br/>         WEB: www.CamdenBoss.com</p> | DRAWN MATTHEW WALLACE<br>CHECKED D.SMALLEY<br>STRUCT. TEXTURED DOWN<br>MTL. SEE TABLE<br>COLOUR SEE TABLE<br>NO GIVEN SCALE - IF IN DOUBT ASK | PROJECT RASPBERRY PI A+ ENCLOSURE<br>TITLE BOTTOM U-SHELL<br>DATE 28/10/14<br>S/A. B-BASE<br>CSTM. CAMDENBOSS<br>P.N. CBRPAP_BA | ALL DIMENSION IN mm TO ±0.2mm<br>TOLERANCE UNLESS OTHERWISE STATED |        |          |              |        |              |         |      |               |
| 0              | FIRST ISSUE  | MJW            | 28/10/14        |  |   |   |  |        |          |              |        |              |         |      |               |
| REV.           | MODIFICATION | BY             | DATE            |  |   |   |  |        |          |              |        |              |         |      |               |
| ORDER OF PROD. | MILLING      | BREAK FLASHING | REVERSE MILLING |  | TONGUE  | CHAMFER/RAD   | BENDING CUT  | GROOVE | SAW-CLIP | COUNTER SINK | INSERT | SCREEN PRINT | BENDING | GLUE | RFI SHIELDING |
| TIME FOR 1     | /            | /              | /               |  |   |   |  |        |          |              | /      |              | /       |      |               |

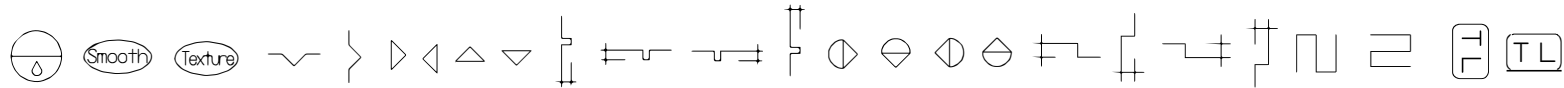
APPROVED

PROTOTYPE / PRODUCTION NOTES:


!! TO BE PASSED BACK TO DESIGN !!

EXAMPLE:

1. DRAWING \_AA (TOP U-SHELL) CHAMFER SYMBOL MISSING.



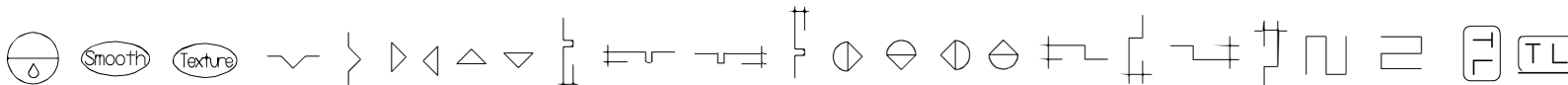
| TOOL TABLE |                           |       |
|------------|---------------------------|-------|
| No.        | DESCRIPTION               | ORDER |
| 1          | 6mm STRAIGHT SINGLE FLUTE | -     |
| 2          | 6mm CSK / CHAMFER         | -     |
| 3          |                           | -     |
| 4          | R2 FACET                  | -     |
| 5          |                           | -     |
| 6          | 3mm STRAIGHT SINGLE FLUTE | -     |
| 7          | 2mm STRAIGHT SINGLE FLUTE | -     |
| 8          |                           | -     |
| 9          | ENGRAVING TOOL            | -     |
| 10         | 1mm STRAIGHT SINGLE FLUTE | -     |

|                |              |                |                 |   |             |                 |           |                              |              |        |              |         |                         |               |          |
|----------------|--------------|----------------|-----------------|---|-------------|-----------------|-----------|------------------------------|--------------|--------|--------------|---------|-------------------------|---------------|----------|
| -              | -            | -              | -               | <br><b>CAMDENBOSS</b><br>JAMES CARTER RD, MILDENHALL, SUFFOLK, IP28 7DE TEL:<br>01638 716101 FAX: 01638 716554<br>EMAIL: Sales@CamdenBoss.com<br>WEB: www.CamdenBoss.com | DRAWN       | MATTHEW WALLACE | PROJECT   | RASPBERRY PI A+ ENCLOSURE    | 5            |        |              |         |                         |               |          |
| -              | -            | -              | -               |   | CHECKED     | -               | TITLE     | PROTOTYPE / PRODUCTION NOTES | 6            |        |              |         |                         |               |          |
| -              | -            | -              | -               |   | STRUCT.     | -               | DATE      | 28/10/14                     | 7            |        |              |         |                         |               |          |
| -              | -            | -              | -               |   | MTL.        | -               | S/A.      | N-NOTES                      | 8            |        |              |         |                         |               |          |
| 0              | FIRST ISSUE  | MJW            | 28/10/14        |   | COLOUR      | -               | CSTM.     | CAMDENBOSS                   | 9            |        |              |         |                         |               |          |
| REV.           | MODIFICATION | BY             | DATE            | ALL DIMENSION IN mm TO ±0.2mm TOLERANCE UNLESS OTHERWISE STATED   |             | P.N.            | CBRPAP_NA | 10                           |              |        |              |         |                         |               |          |
| ORDER OF PROD. | MILLING      | BREAK FLASHING | REVERSE MILLING | TONGUE  | CHAMFER/RAD | BENDING CUT     | GROOVE    | SAW-CLIP                     | COUNTER SINK | INSERT | SCREEN PRINT | BENDING | GLUE TIME PER ENCLOSURE | RFI SHIELDING | PAINTING |
| TIME FOR 1     |              |                |                 |   |             |                 |           |                              |              |        |              |         |                         |               |          |


APPROVED

PACKING INSTRUCTIONS:

1. PLACE 4x RUBBER FEET (KF219) INTO A SELF SEAL BAG (2.25" x 2.25").
2. PLACE THE ABOVE BAG INTO THE (\_BA BOTTOM U-SHELL).
3. SHRINK-WRAP INDIVIDUALLY AT !! 60° !!
4. PLACE A DISTRIBUTORS LABEL ON EACH SHRINK-WRAPPED ENCLOSURE.
5. REFER TO PICKING SLIP FOR PACKING INSTRUCTIONS. IF THERE ARE NO INSTRUCTIONS ON THE PICKING SLIP PLEASE REFER TO STEP 6-8.
6. IN A LARGE CAMDENBOSS BOX, PLACE A LAYER OF BUBBLE WRAP AT THE BOTTOM OF THE BOX.
7. PLACE 200 INDIVIDUALLY SHRINK-WRAPPED PARTS IN COLOURS, PLACING A PIECE OF CARD INBETWEEN EACH COLOUR.
8. PLACE A LAYER OF BUBBLE WRAP AT THE TOP OF THE BOX.



| TOOL TABLE |                           |       |
|------------|---------------------------|-------|
| No.        | DESCRIPTION               | ORDER |
| 1          | 6mm STRAIGHT SINGLE FLUTE | -     |
| 2          | 6mm CSK / CHAMFER         | -     |
| 3          |                           | -     |
| 4          | R2 FACET                  | -     |
| 5          |                           | -     |
| 6          | 3mm STRAIGHT SINGLE FLUTE | -     |
| 7          | 2mm STRAIGHT SINGLE FLUTE | -     |
| 8          |                           | -     |
| 9          | ENGRAVING TOOL            | -     |
| 10         | 1mm STRAIGHT SINGLE FLUTE | -     |

|                |              |                |                 |   |   |  |        |          |              |        |              |         |      |               |          |
|----------------|--------------|----------------|-----------------|---|---|--|--------|----------|--------------|--------|--------------|---------|------|---------------|----------|
| -              | -            | -              | -               | <br><b>CAMDENBOSS</b><br>JAMES CARTER RD. MILDENHALL, SUFFOLK, IP28 7DE TEL:<br>01638 716101 FAX: 01638 716554<br>EMAIL: Sales@CamdenBoss.com<br>WEB: www.CamdenBoss.com | DRAWN MATTHEW WALLACE<br>CHECKED D.SMALLEY<br>STRUCT. -<br>MTL. -<br>COLOUR - | PROJECT RASPBERRY PI A+ ENCLOSURE<br>TITLE PACKING INSTRUCTIONS<br>DATE 28/10/14<br>S/A. X-PACKING<br>CSTM. CAMDENBOSS<br>P.N. CBRPAP_XA | 5      | -        |              |        |              |         |      |               |          |
| -              | -            | -              | -               |   | 6   | -  |        |          |              |        |              |         |      |               |          |
| A              | ECR-000-350  | JPG            | 14/04/15        |   | 7   | -  |        |          |              |        |              |         |      |               |          |
| 0              | FIRST ISSUE  | MJW            | 28/10/14        |   | 8   | -  |        |          |              |        |              |         |      |               |          |
| REV.           | MODIFICATION | BY             | DATE            | ALL DIMENSION IN mm TO ±0.2mm<br>TOLERANCE UNLESS OTHERWISE STATED  |   | NO GIVEN SCALE - IF IN DOUBT ASK   | 9      | -        |              |        |              |         |      |               |          |
| ORDER OF PROD. | MILLING      | BREAK FLASHING | REVERSE MILLING | TONGUE  | CHAMFER/RAD   | BENDING CUT  | GROOVE | SAW-CLIP | COUNTER SINK | INSERT | SCREEN PRINT | BENDING | GLUE | RFI SHIELDING | PAINTING |