


002
PCB TERMINAL
BLOCKS081
TERMINAL STRIPS095
WIRE TO BOARD
CONNECTORS100
CIRCULAR
CONNECTORS151
IP68 CONNECTORS158
INTERFACE
MODULES AND
RELAY BASES

5.08mm screwless terminal blocks

Product overview

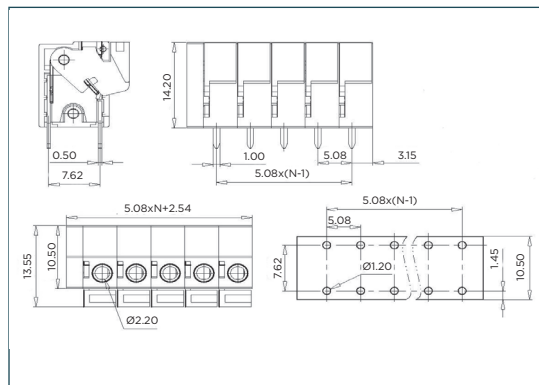
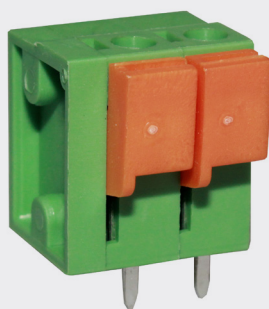
- Interlocking modules
- Easily breakable to desired number of poles
- Guided pin alignment
- Choice of vertical or horizontal cable entry
- Moulded in green UL94-V0 PA66
- 0.34-2.5mm² cable (22-14AWG)
-  approved

SPECIFICATION

Rating	10A/300V
Insulation withstand voltage	AC2500V/1 min
Insulation resistance	500MΩ at DC500V
Operating temperature	-40°C to +115°C
Moulding	UL94-V0 PA66
Pin/contact	Tin plated brass
Recommended PCB hole size	1.2mm

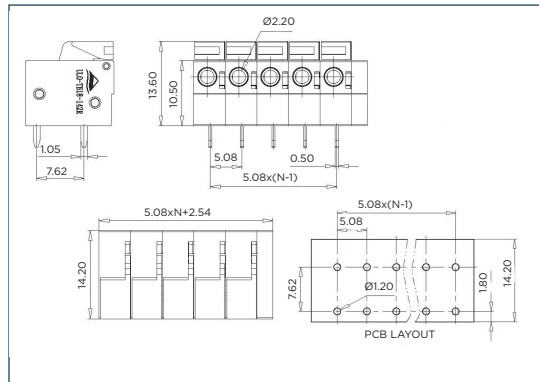
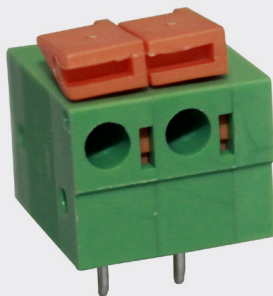
PART NO.	POLES	LENGTH
CSTBP508V/2	2	12.7mm
CSTBP508V/3	3	17.8mm
CSTBP508V/4	4	22.9mm
CSTBP508V/5	5	27.9mm
CSTBP508V/6	6	33.0mm
CSTBP508V/7	7	38.1mm
CSTBP508V/8	8	43.2mm
CSTBP508V/9	9	48.3mm
CSTBP508V/10	10	53.3mm
CSTBP508V/11	11	58.4mm
CSTBP508V/12	12	63.5mm

CSTBP508V



PART NO.	POLES	LENGTH
CSTBP508H/2	2	12.7mm
CSTBP508H/3	3	17.8mm
CSTBP508H/4	4	22.9mm
CSTBP508H/5	5	27.9mm
CSTBP508H/6	6	33.0mm
CSTBP508H/7	7	38.1mm
CSTBP508H/8	8	43.2mm
CSTBP508H/9	9	48.3mm
CSTBP508H/10	10	53.3mm
CSTBP508H/11	11	58.4mm
CSTBP508H/12	12	63.5mm

CSTBP508H



KEY FEATURES

Dual row pins | Vertical or horizontal cable entry | Modular design

