

5x20mm panel mounting fuseholders

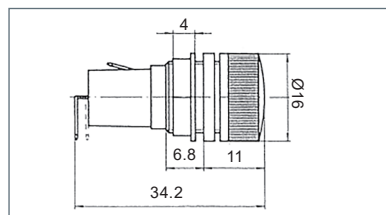
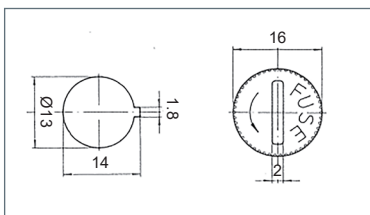
Product overview

- Finger/screwdriver release
- Anti-rotation key fixing
- Combined solder/2.8mm quick connect terminals
- Compact
- EN60127-6
-    approved



SPECIFICATION	
Rating	10A/250V
Contacts	Tinned nickel plated brass
Moulding	UL94-V0 flame retardant PC
Dielectric strength	>3kV
Insulation resistance	>100MΩ
Power dissipation	2.5W (VDE)
Operating temperature	-30°C to +85°C
Shocksafe category	PC2

PART NO.	TYPE
CFH05	Panel mount fuseholder



KEY FEATURES

Finger or screw release | Anti rotation | Standard profile panel mount

5x20mm snap fit panel mounting fuseholders

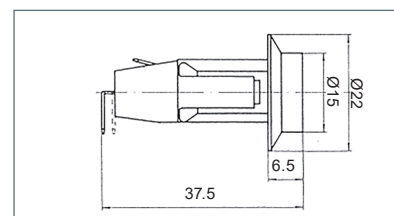
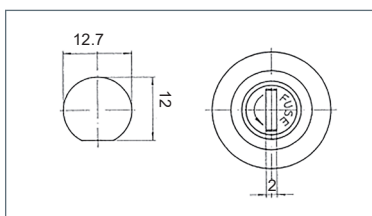
Product overview

- Snap-fit panel mounting
- Screwdriver release screw fuse carrier
- Combined solder/2.8mm quick connect terminals
- Anti-rotation D fixing
- EN60127-6
-    approved



SPECIFICATION	
Rating	6.3A/ 250V
Contacts	Tinned nickel plated brass
Moulding	UL94-V0 flame retardant PBT
Dielectric strength	3kV
Insulation resistance	>100MΩ
Power dissipation	2.5W
Operating temperature	-30°C to +85°C
Shocksafe category	PC2

PART NO.	CARRIER	RELEASE
CFH08	Screw	Screwdriver



KEY FEATURES

Hybrid terminal | Anti rotation body moulding | quick release carrier