

SOLAR PANELS

A range of high performance UK manufactured silicon cell solar panels

Aluminium Framed

- High quality mono crystalline silicon cell modules
- Lightweight aluminium frame
- IP65 junction box includes bypass diodes
- 4mm low iron toughened glass maximising panel efficiency and strength

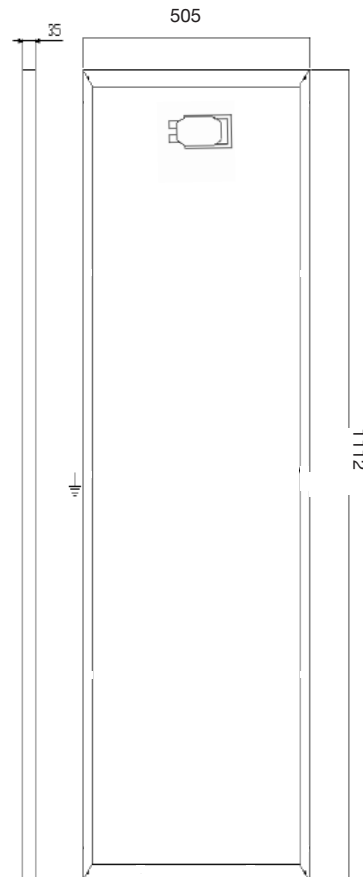
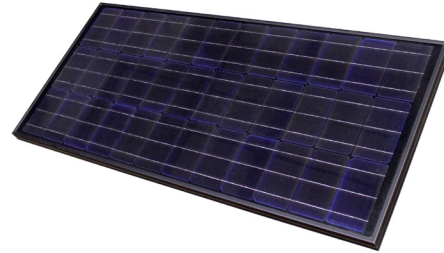
CBSPGF/100 - 100w Solar Panel

SPECIFICATION	100W
Maximum Power (Pmax) (W)	100
Voltage at Max Power (Vmp)	19.3
Current at Max Power (Imp)	5.21
Voltage at open circuit (Voc)	23
Current at short circuit (Isc)	5.75
Cell Efficiency (%)	19
Panel Efficiency (%)	15.5
Temp. Co-eff. Current (%/C)	0.05
Temp. Co-eff. Voltage (%/C)	-0.33
Temp. Co-eff. Power (%/C)	-0.42
Operating Temperature	-40° +85° C
Bypass Diodes	2
Dimensions	1112mm (L) x 505mm (W) x 35mm (D)
Weight	7.5kg
Quality	Manufactured in our ISO 9001-2015 and ISO 14001 certified factory. Complies with TUV sUD accreditation, IEC 61215 and IEC 61730 MCS accredited BAPT 8501

Typical Applications:

- Signage & lighting
- Leisure/ expedition vehicles
- Outdoor recreation
- Remote/ unmanned equipment
- Marine

CBSPGF/100



PCB
TERMINAL
BLOCKS

INTER-
CONNECTION

FUSES &
FUSE-
HOLDERS

LEDs &
INDICATORS

MINIATURE
SWITCHES

LIMIT &
SAFETY
SWITCHES

CONTROL
PRODUCTS

INTERFACE
MODULES &
SUPPORTS

RELAY
BASES

DIN RAIL
ENCLOSURES

BATTERIES

SOLAR
PANELS

TRANS-
FORMERS