



178  
MICROSWITCHES

182  
TACTILE SWITCHES

186  
22MM CONTROL SWITCHES

191  
FOOT SWITCHES

193  
LIMIT SWITCHES

203  
PIEZO SWITCHES AND KEYPADS

SWITCH

188

# 22mm diameter control switches

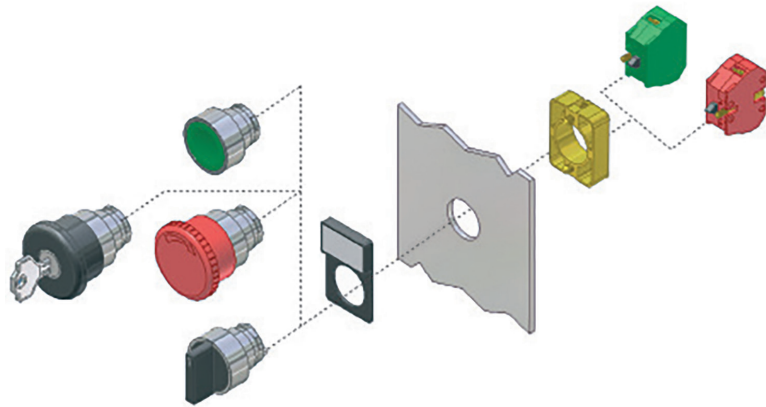
## Product overview

- Metal and plastic bodied control push-buttons, E-stops and selector switches
- Rated 660V, 10A max AC
- Operating frequency 3,600 per hour
- Panels mount 1-6mm thick
- Positive opening operation
- Conform to IEC 947-5-1 and EN 60947-5-1
- Terminal marking to EN 50013
- Other button options available to order
- approved

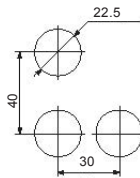


### SPECIFICATION

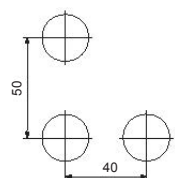
Rated voltage	660V	
Rated AC current	24V 240V 400V	10A 6A 4A
Rated DC current	24V 125V 250V	2.8A 0.55A 0.27A
Short circuit protection	gG fuse	10A
Impulse withstand	6kV	
Internal resistance	<25mΩ	
Wire acceptance	0.75-2.5mm <sup>2</sup>	
Rated temperature	Operating Storage	-25°C to +75°C -40°C to +80°C
Material	Metal Plastic	Chromium plated Fibreglass reinforced thermo-plastic
Electrical protection	Metal Plastic	Class I Class II
Ingress protection	IP65	
Mechanical durability	1x10 <sup>6</sup> Operations	



230V and same polarity panel spacing



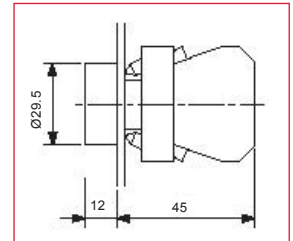
400V and different polarity panel spacing



## Flush push buttons

METAL BODIED	PLASTIC BODIED	COLOUR
CCTTR30BK	CCTPR30BK	Black
CCTTR30RD	CCTPR30RD	Red
CCTTR30GW	CCTPR30GW	Green
CCTTR30YW	CCTPR30YW	Yellow
CCTTR30BL	CCTPR30BL	Blue
CCTTR30WH	CCTPR30WH	White

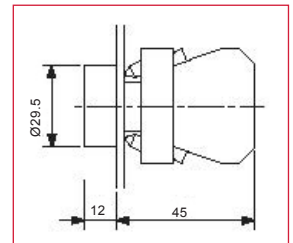
CCTTR30GW



## On/off push buttons

METAL BODIED	PLASTIC BODIED	COLOUR
CCTTR00RD	CCTPR00RD	Red - 0
CCTTR01GN	CCTPR01GN	Green - 1

CCTTR00RD / CCTTR01GN



## Arrow push buttons

METAL BODIED	PLASTIC BODIED	STYLE
CCTTRAHBK	N/A	Horizontal
CCTTRAVBK	N/A	Vertical

CCTTRAHBK / CCTTRAVBK

