

Duotechno - Case study

# DUOTECHNO

## SMARTBOX+ ENCLOSURE

CamdenBoss offers a multitude of industrial products including terminal blocks, waterproof connectors, fuses and fuse holders. We also manufacture standard and customised plastic and metal enclosures. Additionally, by working in partnership with customers we can offer bespoke engineered solutions.

### What is the DUOTECHNO SMARTBOX+?

The Smartbox+ by DUOTECHNO has been designed with home users in mind. Utilising one of CamdenBoss' CNMB DIN Rail enclosures, the Smartbox+ is the ideal starters package for home automation purposes. The CNMB was selected for this project due to the vented option, directly addressing any overheating concerns as well as providing a DIN Rail mounting base.

The module provides a wide range of possible uses, with potential to control up to 12 light circuits, four of which are dimmable through a built-in feature. There are 16 entries making use of the double-sided terminal openings on each side of the CNMB. The terminal connection allows for push buttons and movement detectors; you can also control a screen, a roller shutter or gate. An integrated 12V DC power supply enables the user to power movement detectors, primarily for smart security systems around the home. To top it off the device also allows two temperature sensors to be connected - all of this from one very handy IoT device!

However, it doesn't stop there...



**CAMDENBOSS**  
CONNECT. ENCLOSE. INNOVATE.

Call us on +44 (0) 1638 716101  
or email [sales@camdenboss.com](mailto:sales@camdenboss.com)

The Duotechno Smartbox+  
started of life as a:  
**CNMB/12V/2**  
The lid used was a:  
**CNMB/12/PG**

...The Smartbox+ is also equipped with a network interface, enabling the user to connect up to five smart devices such as smartphones and tablets. To get started the user must fill out the IP address to connect with the system and that's it, everything else runs on autopilot. This simplicity is ideal for world we live in. Creating a more connected experience in our homes where comfortability is key.

With so much to offer and all for a very competitive price. When you think home automation, think Smartbox+.

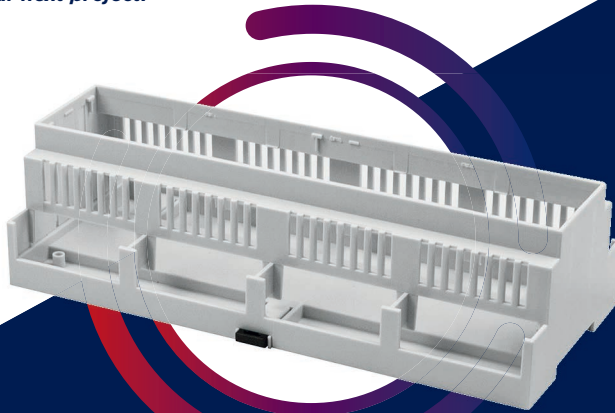
### **What is the benefit of the DUOTECHNO SMARTBOX+?**

Home systems are becoming more automated and these devices make our lives more comfortable.

With the ability to remotely control almost anything in our homes, the Smartbox+ has been developed with a user-friendly interface. With a single touch of a button on your wireless tablets and mobile phones, you can control, lighting, access and audio, leaving you in complete control of your new smart home.

- **15 years' experience in home automation**
- **User friendly interface**
- **Control multiple electronics and systems around the home/office**
- **Network connectivity**
- **16 terminal connections**
- **2 temperature connections**

***Call the CamdenBoss sales team today on +44 1638 716101 to find out what we can do for your next project.***



**CAMDENBOSS**  
CONNECT. ENCLOSE. INNOVATE.

**CREATE MORE THAN  
JUST A BOX...**

Our enclosures can be customised to your requirements. We offer precision CNC machining of holes, slots, cut-outs, digital printing, coatings, finishes and more...

**Call us on +44 (0) 1638 716101  
or email [sales@camdenboss.com](mailto:sales@camdenboss.com)**