

One enclosure...multiple solutions

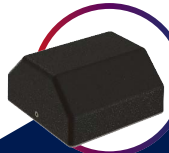
# 1500 SERIES VERSATILE IoT ENCLOSURE

**Our new enclosure brings a unique, flexible multi-faced design allowing multiple solutions for endless possibilities.**

**Ideal for home automation and IoT products, this enclosure is the solution for a wide-range of applications. The enclosure includes mountings for development boards such as Raspberry Pi, Arduino, BeagleBone, etc.**

With it's unique multi-faceted design, it is an ideal choice for use in the corner of a room, on your desk or mounted on a range of surfaces. Our designers have created these enclosures to give you flexibility whatever the application.

- Designed to enable PCBs to be fitted to all internal faces.
- Unique optional PCB mount provides mounting options for a variety of PCBs and development boards.
- Every external face can accommodate displays, user interfaces etc.
- Ease of assembly - the lid can be secured by single screw whilst still meeting the requirements of EN60950.
- Moulded in high quality UL94-V0 ABS.



**Available in**  
vented and unvented  
versions, in black or white

**Options include**  
Unique PCB mount kit including retaining clips



**CAMDENBOSS**  
CONNECT. ENCLOSE. INNOVATE.

Call us on +44 (0) 1638 716101  
or email [sales@camdenboss.com](mailto:sales@camdenboss.com)

**CREATE MORE THAN  
JUST A BOX...**

Our enclosures can be customised to your requirements. We offer precision CNC machining of holes, slots, cut-outs, digital printing, coatings, finishes and more...