

# GAMCIRC

CIRCULAR CONNECTORS



**CONNECTED AGAINST THE ELEMENTS**

# CAMDENBOSS

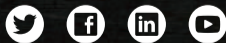
ELECTRONICS & ENCLOSURES

## **CAMDENBOSS LTD**

60 James Carter Road  
Mildenhall, Suffolk, IP28 7DE, UK

**T** +44 (0)1638 716101

**E** [sales@camdenboss.com](mailto:sales@camdenboss.com)



# THE CAMCIRC RANGE

CamCirc is the interconnect solution from CamdenBoss that can take on the elements and withstand the worst of nature.

'WEATHER' your application be military, industrial, autosport, medical or marine, CamCirc will perform where other products often fail. From the glamour of the broadcasting world, to the tough demands of the agricultural and construction machinery industries, our CamCirc range keeps you connected against the elements!

- IP68 sealed using vacuum technology
- Multiple options in various body size and types, housing contact configurations from 3 to 19 poles
- Tough high performance interconnection solution; these products will not disconnect when the cable is under physical load or stress
- Colour coded for ease of connection
- Ideal for harsh environments and 'glove friendly'



**APPLICATIONS: BROADCASTING • MILITARY  
ENERGY • MARINE • FOOD PROCESSING •  
INDUSTRIAL AUTOMOTIVE • AUTOSPORT  
MEDICAL • OIL & GAS RAIL • ROBOTICS •  
AGRICULTURAL MACHINERY • AEROSPACE •  
SECURITY**

The military require reliability when it matters most; needing equipment and hardware to operate in some of the world's most extreme conditions.

Desert to jungle, in the harshest conditions, CamCirc holds its own. This range of circular connectors can withstand extreme temperatures, shock, vibration and ensures the highest cable retention capabilities.

Military applications for CamCirc include target acquisition systems, battlefield laptops as well as guidance systems and GPS. Whether supplying vital power or relaying critical data, the CamCirc will connect.



# MILITARY

The design, development and manufacture of medical devices demands a certain level of reliability.

CamCirc provides the degree of assurance demanded by medical professionals and their manufacturers in critical care applications.

Supplied to IP68 standards preventing fluid ingress and utilising vacuum seals to stop unintended disconnection, CamCirc is the solution for surgical and diagnostic applications.



# MEDICAL

Worldwide our transport infrastructure is subject to increasing demands for capacity, in both new projects and upgrading existing systems.

Safety in the rail sector is paramount. The transfer of critical power and data demands a reliable, robust and precise connection system, CamCirc.



# RAIL

CamCirc offers reliable multipole connectors for the most arduous, 24/7, industrial applications.

Our push-pull connectors with vacuum sealing, rated to IP68 are resistant to shock, vibration and corrosion. CamdenBoss technical staff provide in-depth technical support to solution providers and maintenance engineers *around the clock*.





The multipole connector worthy of pole position.

The transfer of split second data allows you to provide a secure connection capable of withstanding extreme shock and vibration.

CamCirc provides the solution in all formats of motorsport, from track racing in desert conditions to sub-zero rally environments. Reliable and robust, proud to be part of winning teams.



# AUTOSPORT

The marine industry operates in the world's harshest environments and relies on the highest quality components.

Corrosion resistance and high levels of ingress protection are key attributes of the CamCirc range.

Vital instrumentation and systems use our circular connectors, linking data transfer and power requirements in navigation and monitoring applications.



As agriculture becomes more automated and technology driven, the utilisation of robust connectors has become vital, ensuring reliable power and data connections remain secure.

Machinery, monitoring equipment and even drones are now common place in the field. CamCirc allows engineers to 'design in' a fit for purpose, vibration and ingress resistant solution.



Connecting outdoor broadcast equipment in all weathers and keeping the broadcast live needs the level of reliability CamCirc offers as standard.

In studio, CamCirc provides flexibility, enabling the quick reconfiguration of equipment demanded by a fast moving working environment. This makes CamdenBoss the supplier of choice for broadcast components.



Whether it's harnessing nature from green energy or keeping nuclear and gas sources online, our range makes vital connections secure.

In an industry where telemetry, data logging and live data feeds are vital, CamCirc is dependable.

Hard wearing plated fittings that are IP68 rated with vacuum sealing features meet demanding requirements. Demand CamCirc.





**CONNECTED**

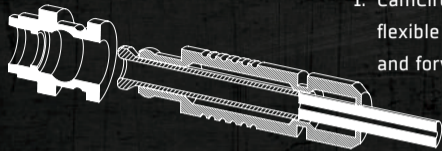
**AGAINST THE ELEMENTS**

- The push-pull connection method creates a vacuum seal and cannot be disconnected if the cable is pulled
- Disconnection is achieved by pulling back the outer sleeve of the connection
- The connectors are keyed so only the correct connection can be achieved
- Code 1 is offered as standard

# **PUSH-PULL CONNECTORS**

## CONNECTING

1. CamCirc Plugs have an outer shell, with flexible interlocks, which slides backwards and forwards along the plug body



## CONNECTED

2. The edges of the plug end are firmly held by a groove inside the socket, creating the vacuum seal



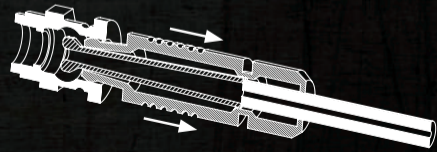
## CABLE UNDER STRESS

3. The edges of the plug are forced against the groove and outer shell, maintaining the secure connection



## DISCONNECTED

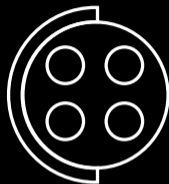
4. Pulling on the outer shell releases the plug from the securing system inside the socket



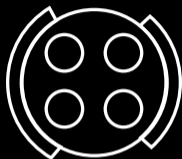


Receptacle

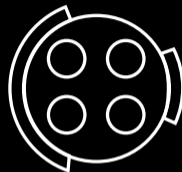
Code 1



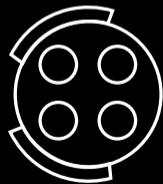
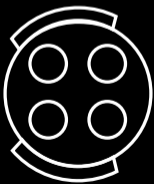
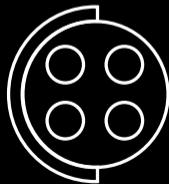
Code 2



Code 3



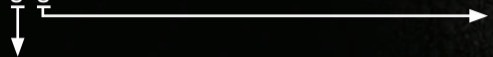
Plug



**TECHNOLOGY**

# IP RATING

IP 6 8



Code	Degree of protection (solids)
0	No protection
1	Protection against large foreign bodies (diameter <50mm)
2	Protection against medium foreign bodies (diameter <12.5mm)
3	Protection against small foreign bodies (diameter <2.5mm)
4	Protection against small foreign bodies (diameter <1mm)
5	Limited dust ingress protection
6	Total dust ingress protection

Code	Degree of protection (water)
0	No protection
1	Protection against vertical water drop
2	Protection against water drops (15° from vertical)
3	Protection against water spray (60° from vertical)
4	Protection against water spray from all directions
5	Protection against low pressure water jets from any angle
6	Protection against high pressure jets from any angle
7	Protection against water submersion to 1m for 30 mins
8	Protection against specific pressure and submersion for long term water

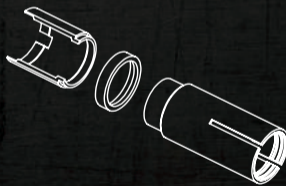
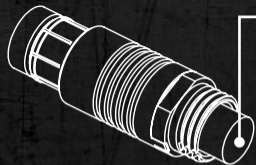
## **WHY CHOOSE CAMCIRC?**

- COMPATIBLE WITH FISCHER PRODUCTS**
- PROFESSIONAL PREMIUM QUALITY PRODUCT**
- TRUSTED BRAND**
- UK CUSTOMER SUPPORT**
- COMPETITIVELY PRICED**

- The cable clamp sets are used to hold the cable/wire in place when the pluggable side of the connection is assembled and the contacts soldered
- Creates the seal on the plug side
- Cable clamps come in corresponding sizes to the plugs they will fit and to the cable in use
- Cable clamps come in three types: shielded, unshielded and environmental
- In order for cable systems to be IP68 rated an environmental cable clamp is required
- Cable clamps are sold separately to the receptacles and plugs
- Cable mount plugs and receptacles cannot be used without a clamp!



1. Remove CamCirc plug  
from packaging

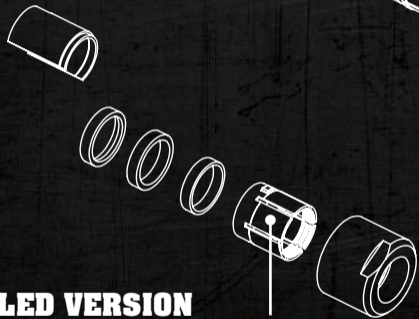


**UNSEALED VERSION**

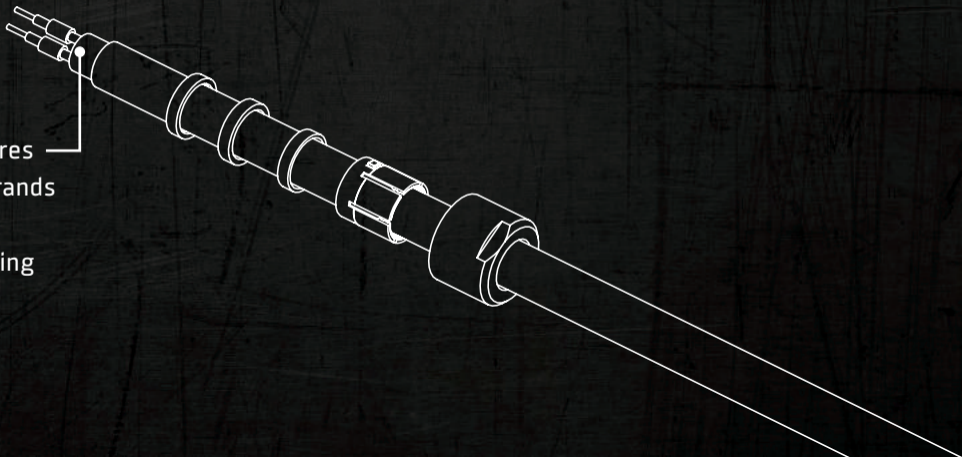
Shielded clamp

**SEALED VERSION**

2. Fit cable clamp piece parts over cable



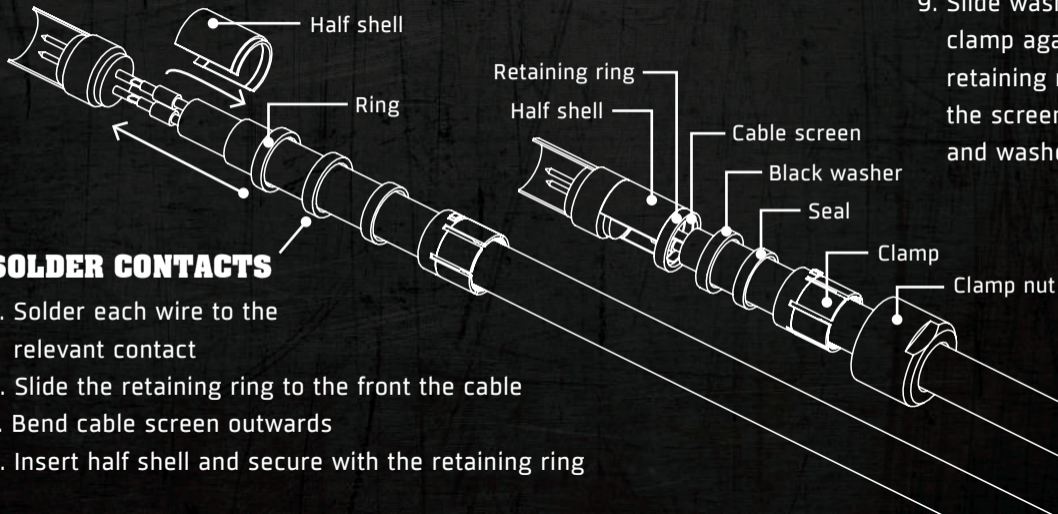
3. Strip cable and wires
4. Tinning of wire strands recommended to prepare for soldering

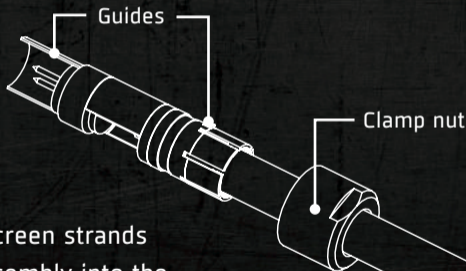
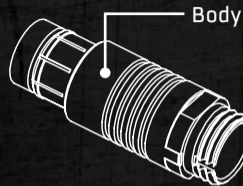


## SOLDER CONTACTS

5. Solder each wire to the relevant contact
6. Slide the retaining ring to the front the cable
7. Bend cable screen outwards
8. Insert half shell and secure with the retaining ring

9. Slide washer, seal and clamp against the retaining ring and retain the screen between ring and washer

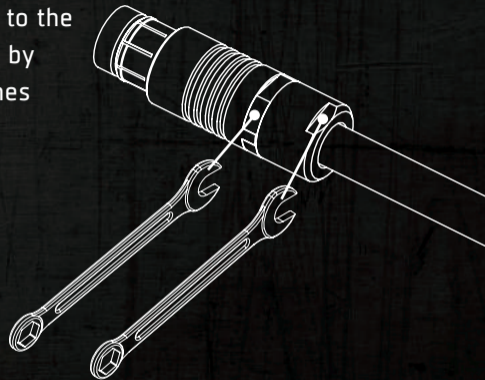




10. Trim protruding screen strands

11. Push the cable assembly into the body, orienting the guides to the slots

12. Screw clamp nut to the body and tighten by means of wrenches



The assembly is now complete





# CONNECTED

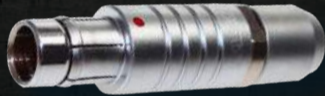
**AGAINST THE ELEMENTS**



**CCB1S1/03**

Panel mount  
Low profile  
3 contacts  
Size 1

+



**CCA1P1/A03**

+



**CCV1C/CC**

2.6 - 3.1 mm

**CCV1C/CD**

3.1 - 3.6 mm

**CCV1C/CE**

3.6 - 4.1 mm

**CCV1C/CF**

4.1 - 4.3 mm

Non IP68 cable clamps also available

**CCB SERIES**  
**8.2A**

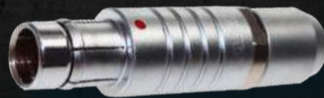
**Cable  
Diameter**

**2.6-4.3**  
**(mm)**



**CCB1S1/04**

Panel mount  
Low profile  
4 contacts  
Size 1



**CCA1P1/A04**



**CCV1C/CC**

2.6 - 3.1 mm

**CCV1C/CD**

3.1 - 3.6 mm

**CCV1C/CE**

3.6 - 4.1 mm

**CCV1C/CF**

4.1 - 4.3 mm

Non IP68 cable clamps also available

**CCB SERIES**  
**5.5A**

**Cable  
Diameter**

**2.6-4.3**  
**(mm)**



+



+



**CCB2S1/03**

Panel mount  
Low profile  
3 contacts  
Size 2

**CCA2P1/A03**

**CCV2C/CE**

3.7 - 4.2 mm

**CCV2C/CG**

4.2 - 4.7 mm

**CCV2C/CH**

4.7 - 5.2 mm

**CCV2C/CI**

5.2 - 5.7 mm

**CCV2C/CJ**

5.7 - 6.2 mm

Non IP68 cable clamps also available

**3.7-6.2**  
**(mm)**



CCB2S1/04

Panel mount  
Low profile  
4 contacts  
Size 2

+



CCA2P1/A04

+



CCV2C/CE	3.7 - 4.2 mm
CCV2C/CG	4.2 - 4.7 mm
CCV2C/CH	4.7 - 5.2 mm
CCV2C/CI	5.2 - 5.7 mm
CCV2C/CJ	5.7 - 6.2 mm

Non IP68 cable clamps also available

**CCB SERIES**  
**7A**

Cable  
Diameter

**3.7-6.2**  
**(mm)**



CCB2S1/06

Panel mount  
Low profile  
6 contacts  
Size 2

+



CCA2P1/A06

+



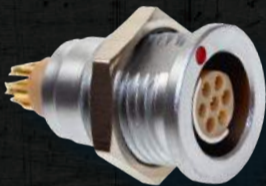
CCV2C/CE	3.7 - 4.2 mm
CCV2C/CG	4.2 - 4.7 mm
CCV2C/CH	4.7 - 5.2 mm
CCV2C/CI	5.2 - 5.7 mm
CCV2C/CJ	5.7 - 6.2 mm

Non IP68 cable clamps also available

**CCB SERIES**  
**5.2A**

Cable  
Diameter

**3.7-6.2**  
**(mm)**



CCB2S1/07

Panel mount  
Low profile  
7 contacts  
Size 2



CCA2P1/A07



CCV2C/CE	3.7 - 4.2 mm
CCV2C/CG	4.2 - 4.7 mm
CCV2C/CH	4.7 - 5.2 mm
CCV2C/CI	5.2 - 5.7 mm
CCV2C/CJ	5.7 - 6.2 mm

Non IP68 cable clamps also available

**CCB SERIES**  
**5A**

Cable  
Diameter

**3.7-6.2**  
**(mm)**



+



+



**CCB2S1/08**

Panel mount  
Low profile  
8 contacts  
Size 2

**CCA2P1/A08**

**CCV2C/CE**

3.7 - 4.2 mm

**CCV2C/CG**

4.2 - 4.7 mm

**CCV2C/CH**

4.7 - 5.2 mm

**CCV2C/CI**

5.2 - 5.7 mm

**CCV2C/CJ**

5.7 - 6.2 mm

Non IP68 cable clamps also available

**3.7-6.2**  
**(mm)**



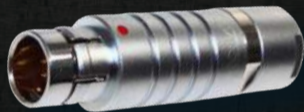


# CCB SERIES 2.5A

Cable  
Diameter



+



+



CCB3S1/19

Panel mount  
Low profile  
19 contacts  
Size 3

CCA3P1/A19

CCU3C/CJ  
CCU3C/CL

5.7 - 6.2 mm  
6.2 - 6.7 mm

Non IP68 cable clamps also available

# 5.7-6.7

(mm)



+



+



**CCB4S1/19**

Panel mount  
Low profile  
19 contacts  
Size 4

**CCA4P1/A19**

**CCU4C/CK**

5.7 - 6.7 mm

**CCU4C/CN**

6.7 - 7.7 mm

**CCU4C/CQ**

7.7 - 8.7 mm

Non IP68 cable clamps also available



+



+



**CCD2S1/04**

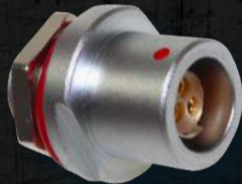
Panel mount  
Protruding for low light conditions  
4 contacts  
Size 2

**CCA2P1/A04**

CCV2C/CE	3.7 - 4.2 mm
CCV2C/CG	4.2 - 4.7 mm
CCV2C/CH	4.7 - 5.2 mm
CCV2C/CI	5.2 - 5.7 mm
CCV2C/CJ	5.7 - 6.2 mm

Non IP68 cable clamps also available

**3.7-6.2**  
**(mm)**



+



+



**CCE1S1/03**

Panel mount  
Protruding for low light conditions  
3 contacts  
Size 1

**CCA1P1/A03**

**CCV1C/CC**

2.6 - 3.1 mm

**CCV1C/CD**

3.1 - 3.6 mm

**CCV1C/CE**

3.6 - 4.1 mm

**CCV1C/CF**

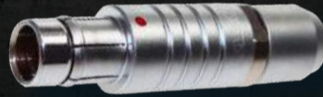
4.1 - 4.3 mm

Non IP68 cable clamps also available

**2.6-4.3**  
**(mm)**



+



+



**CCE1S1/05**

Panel mount  
Protruding for low light conditions  
5 contacts  
Size 1

**CCA1P1/A05**

**CCV1C/CC**

2.6 - 3.1 mm

**CCV1C/CD**

3.1 - 3.6 mm

**CCV1C/CE**

3.6 - 4.1 mm

**CCV1C/CF**

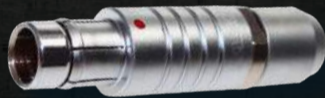
4.1 - 4.3 mm

Non IP68 cable clamps also available

**2.6-4.3**  
**(mm)**



+



+



**CCE1S1/07**

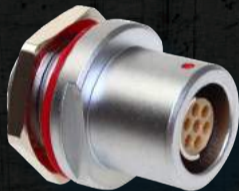
Panel mount  
Protruding for low light conditions  
7 contacts  
Size 1

**CCA1P1/A07**

CCV1C/CC	2.6 - 3.1 mm
CCV1C/CD	3.1 - 3.6 mm
CCV1C/CE	3.6 - 4.1 mm
CCV1C/CF	4.1 - 4.3 mm

Non IP68 cable clamps also available

**2.6-4.3**  
**(mm)**



+



+



**CCE2S1/07**

Panel mount  
Protruding for low light conditions  
7 contacts  
Size 2

**CCA2P1/A07**

**CCV2C/CE**

3.7 - 4.2 mm

**CCV2C/CG**

4.2 - 4.7 mm

**CCV2C/CH**

4.7 - 5.2 mm

**CCV2C/CI**

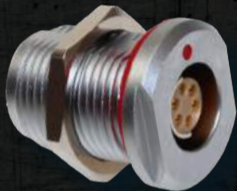
5.2 - 5.7 mm

**CCV2C/CJ**

5.7 - 6.2 mm

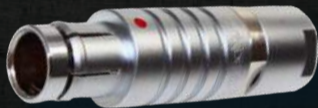
Non IP68 cable clamps also available

**3.7-6.2**  
**(mm)**



**CCL2S1/06**

Panel mount  
Utility style  
6 contacts  
Size 2



**CCA2P1/A06**



**CCV2C/CE**

3.7 - 4.2 mm

**CCV2C/CG**

4.2 - 4.7 mm

**CCV2C/CH**

4.7 - 5.2 mm

**CCV2C/CI**

5.2 - 5.7 mm

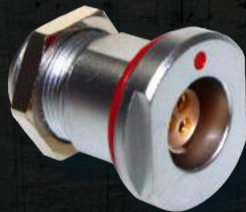
**CCV2C/CJ**

5.7 - 6.2 mm

Non IP68 cable clamps also available

**3.7-6.2**  
**(mm)**





**CCM1S1/03**

Panel mount  
Thick panel type  
3 contacts  
Size 1

+



**CCA1P1/A03**

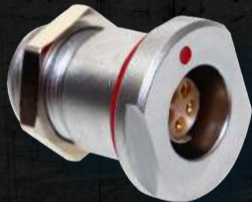
+



CCV1C/CC	2.6 - 3.1 mm
CCV1C/CD	3.1 - 3.6 mm
CCV1C/CE	3.6 - 4.1 mm
CCV1C/CF	4.1 - 4.3 mm

Non IP68 cable clamps also available

**2.6-4.3**  
**(mm)**



+



+



**CCM1S1/05**

Panel mount  
Thick panel type  
5 contacts  
Size 1

**CCA1P1/A05**

**CCV1C/CC**

2.6 - 3.1 mm

**CCV1C/CD**

3.1 - 3.6 mm

**CCV1C/CE**

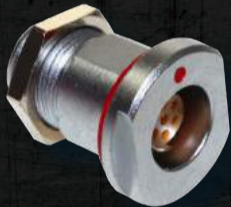
3.6 - 4.1 mm

**CCV1C/CF**

4.1 - 4.3 mm

Non IP68 cable clamps also available

**2.6-4.3**  
**(mm)**



**CCM1S1/07**

Panel mount  
Thick panel type  
7 contacts  
Size 1

+



**CCA1P1/A07**

+



**CCV1C/CC**

2.6 - 3.1 mm

**CCV1C/CD**

3.1 - 3.6 mm

**CCV1C/CE**

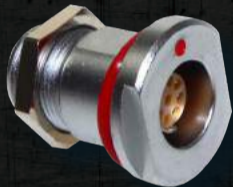
3.6 - 4.1 mm

**CCV1C/CF**

4.1 - 4.3 mm

Non IP68 cable clamps also available

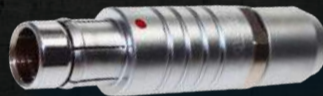
**2.6-4.3**  
(mm)



**CCM1S1/09**

Panel mount  
Thick panel type  
9 contacts  
Size 1

+



**CCA1P1/A09**

+



CCV1C/CC	2.6 - 3.1 mm
CCV1C/CD	3.1 - 3.6 mm
CCV1C/CE	3.6 - 4.1 mm
CCV1C/CF	4.1 - 4.3 mm

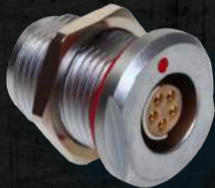
Non IP68 cable clamps also available

**2.6-4.3**  
**(mm)**



# CCM SERIES 6.8A

Cable  
Diameter



CCM2S1/05

Panel mount  
Utility style  
5 contacts  
Size 2

+



CCA2P1/A05

+



CCV2C/CE

3.7 - 4.2 mm

CCV2C/CG

4.2 - 4.7 mm

CCV2C/CH

4.7 - 5.2 mm

CCV2C/CI

5.2 - 5.7 mm

CCV2C/CJ

5.7 - 6.2 mm

Non IP68 cable clamps also available

# 3.7-6.2

(mm)



**CCM2S1/07**

Panel mount  
Utility style  
7 contacts  
Size 2

+



**CCA2P1/A07**

+



CCV2C/CE	3.7 - 4.2 mm
CCV2C/CG	4.2 - 4.7 mm
CCV2C/CH	4.7 - 5.2 mm
CCV2C/CI	5.2 - 5.7 mm
CCV2C/CJ	5.7 - 6.2 mm

Non IP68 cable clamps also available

**3.7-6.2**  
**(mm)**

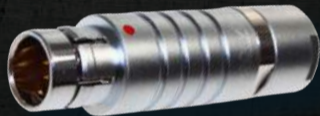


# CCM SERIES 4.5A

Cable  
Diameter



+



+



CCM3S1/10

Panel mount  
Utility style  
10 contacts  
Size 3

CCA3P1/A10

CCU3C/CJ  
CCU3C/CL

5.7 - 6.2 mm  
6.2 - 6.7 mm

Non IP68 cable clamps also available

# 5.7-6.7

(mm)

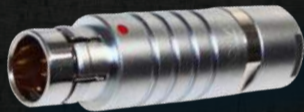


# CCM SERIES 4.2A

Cable  
Diameter



+



+



CCM3S1/12

Panel mount  
Utility style  
12 contacts  
Size 3

CCA3P1/A12

CCU3C/CJ  
CCU3C/CL

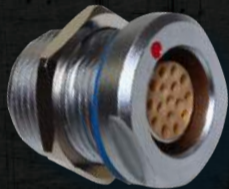
5.7 - 6.2 mm  
6.2 - 6.7 mm

Non IP68 cable clamps also available

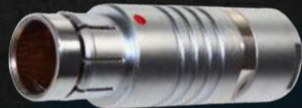
# 5.7-6.7

(mm)





+



+



**CCM4S1/16**

Panel mount  
Utility style  
16 contacts  
Size 4

**CCA4P1/A16**

**CCU4C/CK**

5.7 - 6.7 mm

**CCU4C/CN**

6.7 - 7.7 mm

**CCU4C/CQ**

7.7 - 8.7 mm

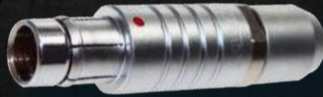
Non IP68 cable clamps also available

**5.7-8.7**

**(mm)**



+



+



**CCS1S1/04**

Cable mount  
4 contacts  
Size 1

**CCA1P1/A04**

**CCV1C/CC**

2.6 - 3.1 mm

**CCV1C/CD**

3.1 - 3.6 mm

**CCV1C/CE**

3.6 - 4.1 mm

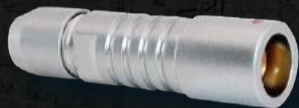
**CCV1C/CF**

4.1 - 4.3 mm

Please note, cable mount receptacles require a cable clamp

Non IP68 cable clamps also available

**2.6-4.3**  
**(mm)**



+



+



**CCT1S1/03**

Cable mount  
3 contacts  
Size 1

**CCA1P1/A03**

**CCV1C/CC**

2.6 - 3.1 mm

**CCV1C/CD**

3.1 - 3.6 mm

**CCV1C/CE**

3.6 - 4.1 mm

**CCV1C/CF**

4.1 - 4.3 mm

Please note, cable mount receptacles require a cable clamp

Non IP68 cable clamps also available



# CCT SERIES 5.2A

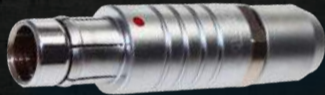
Cable  
Diameter

# 2.6-4.3

(mm)



+



+



CCT1S1/05

Cable mount  
5 contacts  
Size 1

CCA1P1/A05

CCV1C/CC

2.6 - 3.1 mm

CCV1C/CD

3.1 - 3.6 mm

CCV1C/CE

3.6 - 4.1 mm

CCV1C/CF

4.1 - 4.3 mm

Please note, cable mount receptacles require a cable clamp

Non IP68 cable clamps also available



**CCT1S1/07**

Cable mount  
7 contacts  
Size 1

Please note, cable mount receptacles require a cable clamp

**CCA1P1/A07**

**CCV1C/CC**

2.6 - 3.1 mm

**CCV1C/CD**

3.1 - 3.6 mm

**CCV1C/CE**

3.6 - 4.1 mm

**CCV1C/CF**

4.1 - 4.3 mm

Non IP68 cable clamps also available

**2.6-4.3**

**(mm)**



# CCT SERIES 6.8A

Cable  
Diameter



CCT2S1/05

Cable mount  
5 contacts  
Size 2

Please note, cable mount receptacles require a cable clamp

CCA2P1/A05

CCV2C/CE

3.7 - 4.2 mm

CCV2C/CG

4.2 - 4.7 mm

CCV2C/CH

4.7 - 5.2 mm

CCV2C/CI

5.2 - 5.7 mm

CCV2C/CJ

5.7 - 6.2 mm

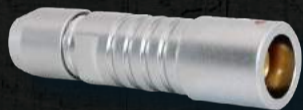
Non IP68 cable clamps also available

# 3.7-6.2 (mm)



# CCT SERIES 5A

Cable  
Diameter



+



+



CCT2S1/07

Cable mount  
7 contacts  
Size 2

CCA2P1/A07

CCV2C/CE

3.7 - 4.2 mm

CCV2C/CG

4.2 - 4.7 mm

CCV2C/CH

4.7 - 5.2 mm

CCV2C/CI

5.2 - 5.7 mm

CCV2C/CJ

5.7 - 6.2 mm

Please note, cable mount receptacles require a cable clamp

Non IP68 cable clamps also available

# 3.7-6.2

(mm)

## **88 SERIES IP67 HEATSINK CASES**

These IP67 heatsink cases are designed for tough environments. Ideal for measuring equipment, industrial control, industrial camera housing, outdoor control boxes and much more.

- Die-cast end panels and heat sink aluminium extrusion body. EMC shielded as standard giving a strong heavy-duty enclosure
- PCB or chassis are mounted horizontally, sliding into grooved inner body frame
- Available in 10 sizes, silver and black colours as standard
- Designed for a tough environment; heavy duty, highly waterproof and heat resistant



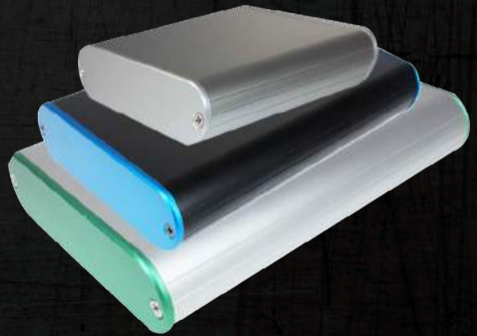
Call our sales team on 01638 716101  
for more information



## **85 SERIES ROUND ALUMINIUM CASES**

CamdenBoss' round aluminium enclosures are ideally suited for applications such as audio amplifiers, communication devices, measurement tools and portable controllers

- The extruded case split through the centre makes for ease of access
- PCB can slide easily into the enclosure
- Screw on end panels (coloured end panels available on request)
- Available in silver and black, with eleven sizes to choose from

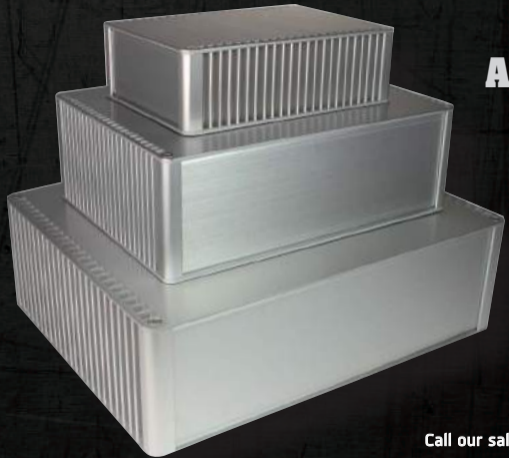


Call our sales team on 01638 716101  
for more information

**86 SERIES  
ALUMINIUM  
AUDIO CASES**

These stylish aluminium cases with heat sink side panels are lightweight and easily customised, making them a great choice for a wide range of applications such as measuring devices, audio equipment, controllers and more

- Heatsink is incorporated into the side plate
- Available in 12 sizes in silver
- Easily customised and lightweight



Call our sales team on 01638 716101  
for more information

## **IP68 CONNECTORS**

We offer a range of high quality IP68 connectors which include junction boxes and in-line, panel mount and T-connectors.

- Simple and easy to use field joiner to link two or more cables
- A wide variety of designs to accommodate many outdoor applications
- Integrated terminal block designs
- Compact, robust and strong
- Colour coded screws/terminals make installation easier
- Brail points to allow installation in low light conditions



Call our sales team on 01638 716101  
for more information

**DESKTOP  
INSTRUMENT  
CASES**

These high quality instrument cases are ideal for use in test, measurement, display and control applications

- Screwless push-fit assembly via 8x lock pins designed for quick and easy assembly
- Horizontal PCB guides in side profiles
- Ventilation slots in lid and base
- Lid and base can be dismantled independently from each other



Call our sales team on 01638 716101  
for more information

## Create your own enclosure No Tooling!

We offer complete custom enclosure solutions; with no restriction on size or quantity, from concept design through to volume production. Having your own fabricated plastic enclosure means a rapid time to market and no mould tool costs.

You can have fully custom designed plastic enclosures manufactured for minimal development costs, to suit your product's unique style and function.

Choose from a range of stock materials including UL94-Vo listed ABS.



Visit our website [www.smartboxx.co.uk](http://www.smartboxx.co.uk)  
for more information

## **CASE STUDY**

The design team at CamdenBoss were approached to create a case for a high security laptop. An ideal application for a custom enclosure in conjunction with CamCirc. Using flat sheet plastic technology the team were able to turn around a design and prototype in a matter of days.

Our design capabilities together with a fast turnaround, complimented by our wide range of components allow us to provide a full solution to your security, military and technological products.

Contact our sales team for a solution for your design needs!



Visit our website [www.smartboxx.co.uk](http://www.smartboxx.co.uk)  
for more information

# CAMDENBOSS

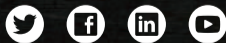
ELECTRONICS & ENCLOSURES

## **CAMDENBOSS LTD**

60 James Carter Road  
Mildenhall, Suffolk, IP28 7DE, UK

**T** +44 (0)1638 716101

**E** [sales@camdenboss.com](mailto:sales@camdenboss.com)





**CONNECTED**

**AGAINST THE ELEMENTS**